

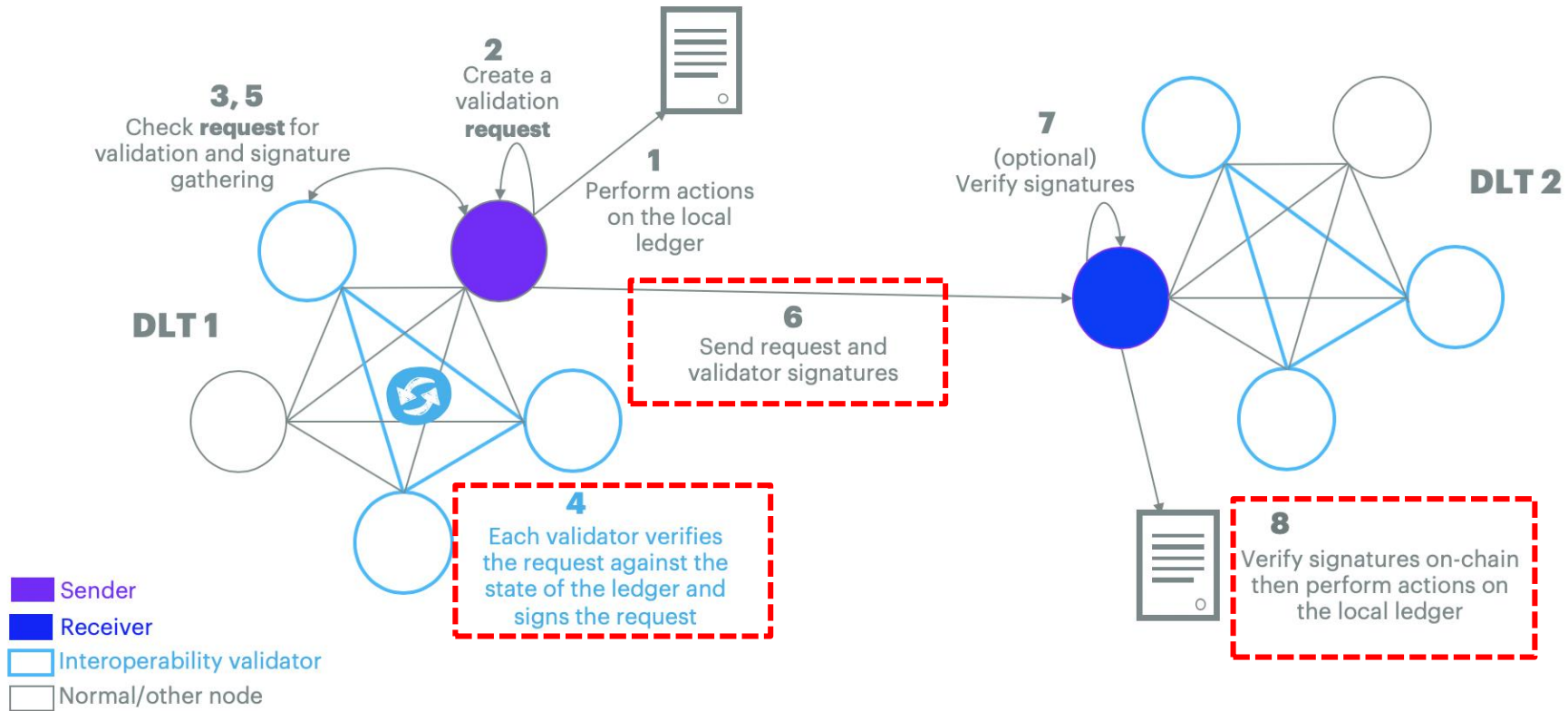
Merged Architecture for HL-BIF

2020/2/23

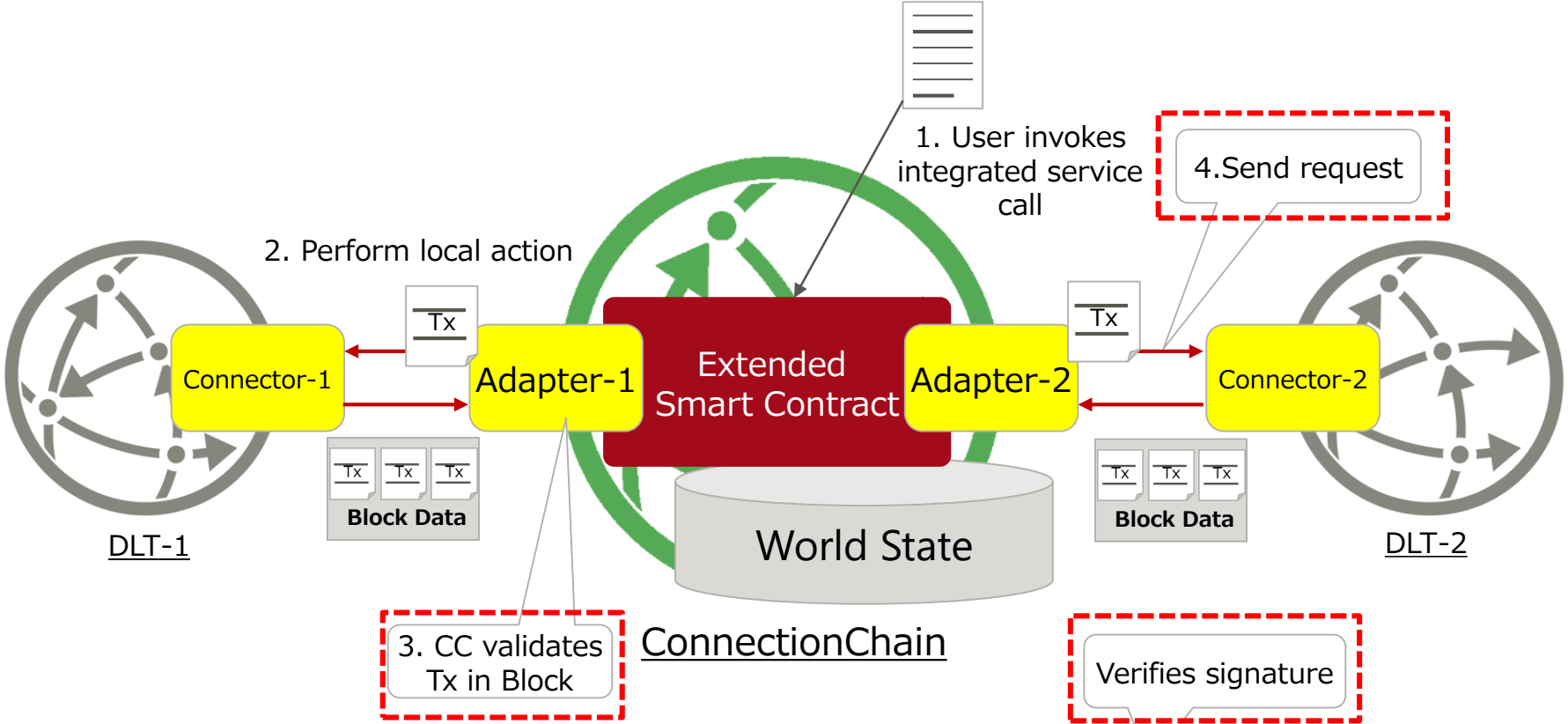
FUJITSU Laboratories Ltd.

- We have two implementations (from Accenture and FUJITSU) as solutions
- FUJITSU will propose a merged architecture based on group consensus in white paper.

Accenture's implementation

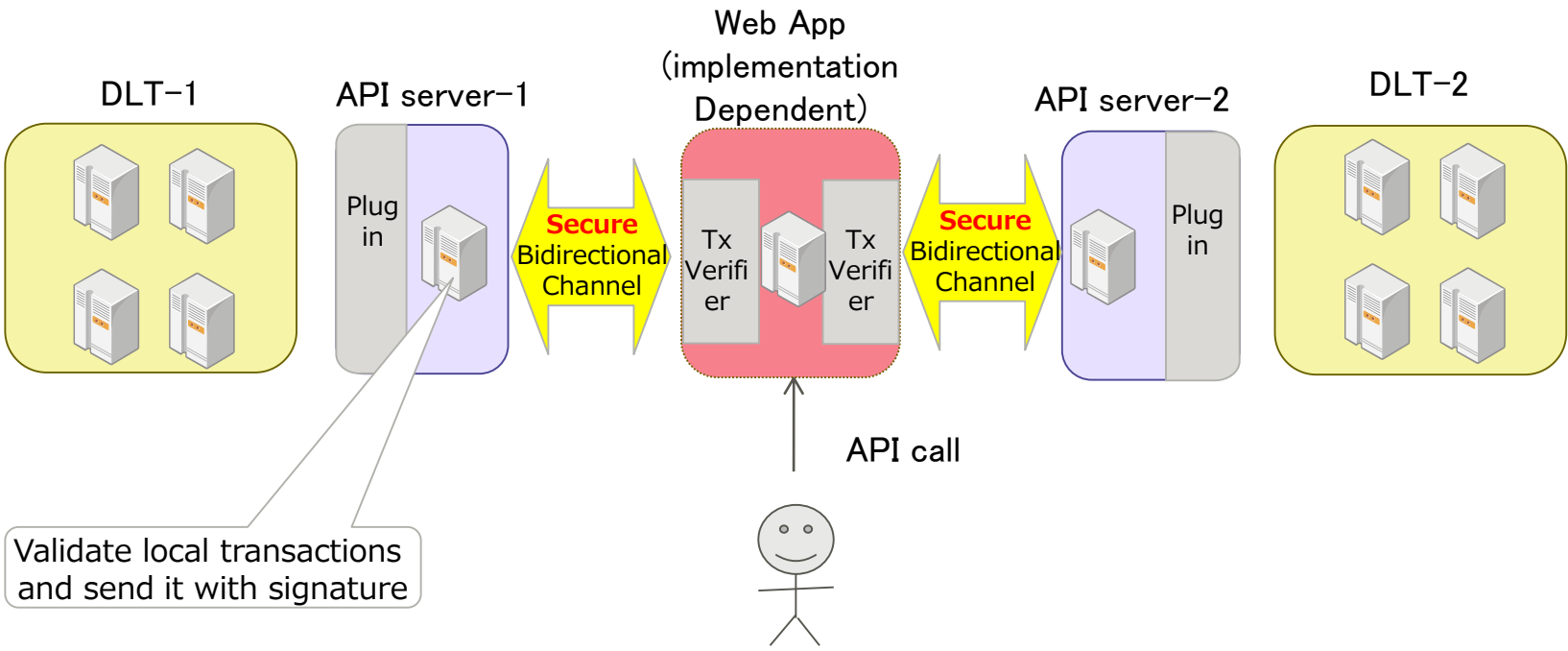



FUJITSU's implementation



Note: Connector and Adapter communicates over secured channel

Merged Architecture





FUJITSU

shaping tomorrow with you